

## Dental Anatomy Package

Primal's Dentistry Package is a dynamic, digital resource that promotes excellence in dental training, practice and teaching. This time saving reference, image library and teaching tool will enhance all aspects of practice and teaching workflow. Easily interact with a wealth of high quality multimedia content focused on dental anatomy and treatment including a medically accurate and fully labeled 3D anatomy atlas for the head, neck, face, oral cavity, dentition and more. Save valuable time and money sourcing high quality anatomy and clinical images for teaching, preparing for consultations and patient education with thousands of images at your fingertips. Presented in a fully integrated and convenient online environment this will prove to be an invaluable on-going reference and multimedia library.

- Provides seamless electronic access to accurate 3D anatomy and clinical content.
- All content can be easily embedded into presentations and patient hand-outs.
- Licenses are based on concurrency and can therefore allow large groups to access the content for a relatively small per user fee.
- Regular content and functionality updates are included in the price for all annual licenses and subscriptions.



**Multimedia clinical content** provides context for students and a wonderful library of anatomy and clinical images, animations and movies for faculty.

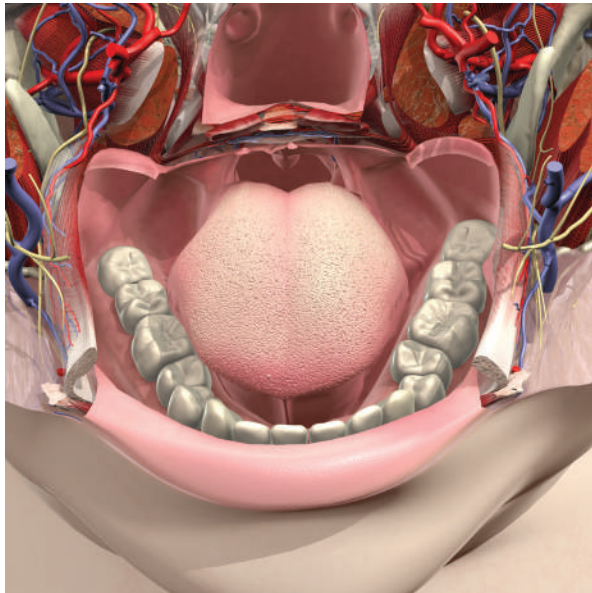
**A wealth of specialty focused content** bring the subject to life and provides clinical context for better application.

**Save valuable time and money** sourcing high quality anatomy and clinical content preparing for consultations and patient education with thousands of images at your fingertips.

**Easily interact with a wealth of high quality** multimedia content focused on dental anatomy and treatment including a medically accurate and fully labeled 3D anatomy atlas for the head, neck, face, oral cavity, dentition and more.



## Primal's 3D Human Anatomy for Dentistry



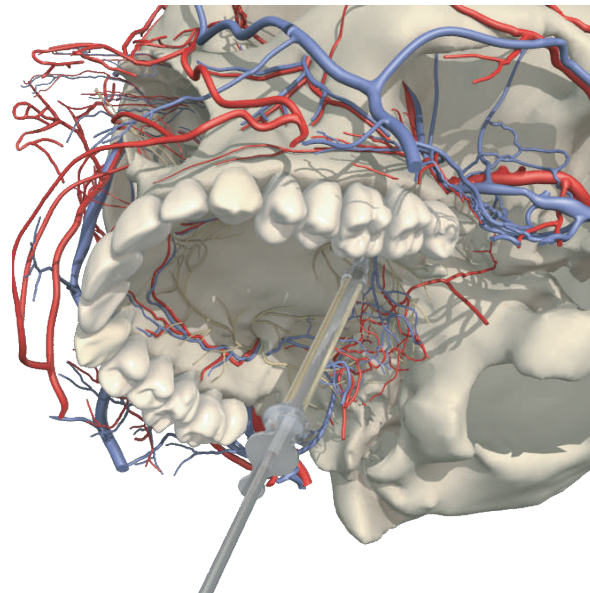
Medically accurate interactive 3D anatomy atlas.

### Choose from over 100 3D anatomy views:

- Head and Neck
- Face
- Anterior neck
- Oral and nasal cavities
- Oral cavity
- Pharynx and larynx
- Dentition
- Nerves
- Eye
- Nerves
- Brain
- Skull

Interactive functions allow the 3D models to be rotated by you and layers of anatomy can be added or removed. Label any visible structure with your mouse then access text about a structure with one mouse click

Specialized clinical content includes 3D views of progressive dental conditions such as caries and gingivitis and detailed and interactive 3D nerve views of intraoral injections.



Clinical text section includes text and images covering:

- Teeth
- Dental anesthesia
- Examination
- Face
- Spread of infection
- Salivary glands
- Joints
- Embryogenesis
- Pterygopalatine fossa

### 3D animations:

- 10 showing functional anatomy of the temporomandibular Joint
- Facial muscle animations
- Neck muscle animations

### MRI Section

Link the 3D model with MRI scans in 3 planes - axial, sagittal, coronal - and move through slices of both the model and MRI.

# PRIMAL PICTURES



## Primal's 3D Human Anatomy for Dental Hygiene

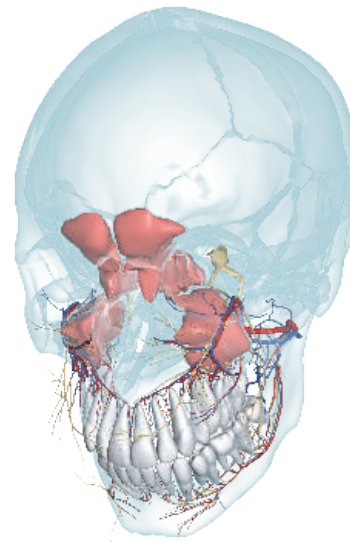


**Transforming teaching, study and practice,** 3D Anatomy for Dental Hygiene is a unique 3D anatomy atlas and reference tool for dental hygienists.

**Perfect for conveying anatomy** in a memorable 3D, this easy to use digital resource provides clear, detailed and accurate 3D modeling of the head, oral and nasal cavities, dentition and individual teeth in 3D – including regions showing cusps, grooves, pits, ridges and roots.

**Specialized clinical content provides** context and application and includes 3D views of progressive dental conditions such as caries and gingivitis and interactive 3D views of intraoral injections.

## Primal's 3D Real-time Viewer for Dentistry



**Focusing on the head, face and jaw** this is perfect tool for creating custom images complete with labels and annotations using medically-accurate 3D anatomy models.

**With 100% user-driven functionality,** the user can rotate the models in any direction using the mouse, choose which anatomical structures are added or removed in groups or individually. Structures can also be viewed in x-ray, opaque or isolation.

**Easily create customized images,** complete with labels and annotations – the user can print or save them for presentations and hand outs.

**Use advanced settings to create** outline only views - great for coloring exercises - or 3D stereograph views for a truly 3D experience!

# PRIMAL PICTURES



Get in touch

Telephone

800-901-5494

Web

www.statref.com

